

VILLA “VICTORIA”



DESCRIPTION

Land plot - 523 m²

Constructed area - apx 340 m² of which 210m² belongs to the living area and 130m² belongs to the terraces.

Internal ground floor surface apx: 123.60 m²

Internal first floor surface apx: 84.80 m²

Interior ceiling height: ground floor - 2.5m, first floor - 2.6m.

TECHNICAL SPECIFICATIONS

EXTERNAL FINISH

FACADE:

- White paint

EXTERIOR CARPENTRY

- Aluminum carpentry Cortizo Cor-Vision, sliding leaves, anodized aluminum profile, with double glazing, according to project design.



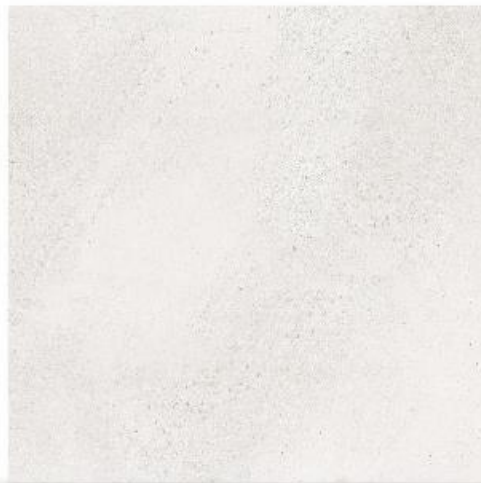
DIVIDING WALLS

- Divisions between housing are of plasterboard, brand "Knauf".
- False ceilings are of plasterboard throughout the house, brand "Knauf".
- Soft color plastic paint to choose in vertical walls.



FLOORING

- Floors inside the house with porcelain stoneware tile the Natural Modernity range.
- Floors in the exterior of the house with porcelain stoneware tile the Natural Modern non-slip class C3 range.



BASE 75X75 IN
[M-768] m²

BATHROOMS

- Sanitary ware of sanitary porcelain:
-Bathtub and washbasins - "Sanycces" brand

 sanycces



Trento
sanitaryacrylic

sanycoat 

- 170 x 80 cm
- 150 x 75 cm



 sanycces



Verona
ceramic vitreous



55 x 35 x 14

- SUSPENDED toilets and bidets in white - "Grohe" brand



-Taps - "Grohe" brand



-Recessed tanks - "Geberit" brand



- Bathroom furniture - natural wood color.
- Custom glass screens.

INTERIOR CARPENTRY

- Entrance door with security lock, natural wood color.
- Interior doors - Smooth white lacquered
- Built-in wardrobes with sliding doors in white dm.



LOCKSMITH

- Automatic metal door, with remote controls.

INSTALLATIONS.

ELECTRICITY, TELEVISION AND TELECOMMUNICATIONS

- Electrical installation in wiring
- Indoor and outdoor floodlights
- TV shots
- Telephone and wiring network for internet data
- Automatic intercom.

PLUMBING

- Water rating system AeroThermal system approximately 200L.
- 500L storage tank installation for water supply reserve.

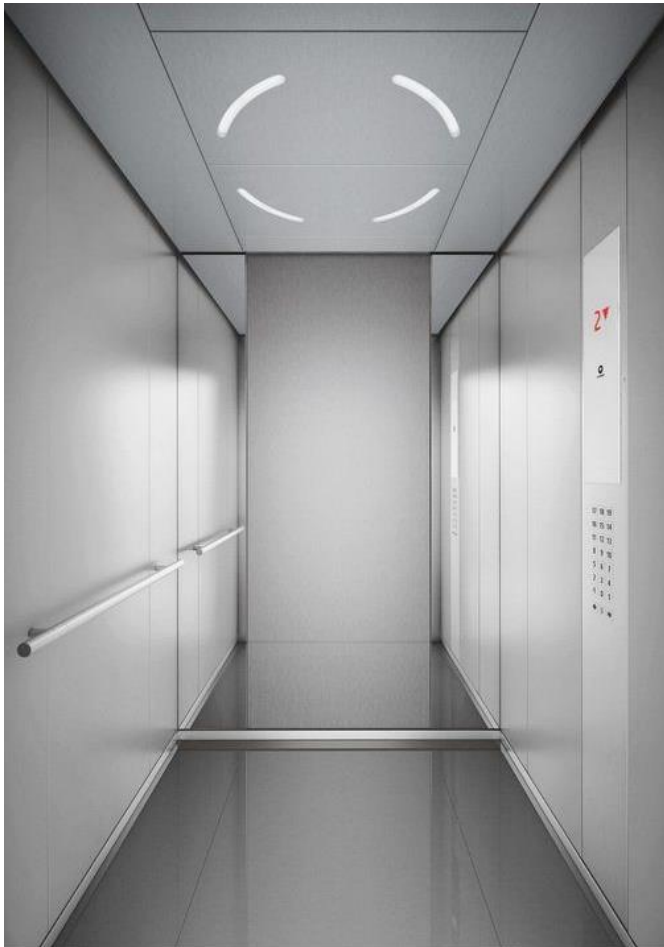
HEATING, ACS and CLIMATIZATION

- Air acclimatization "Daikin" with Airzone grille control.
- Air ventilation system.



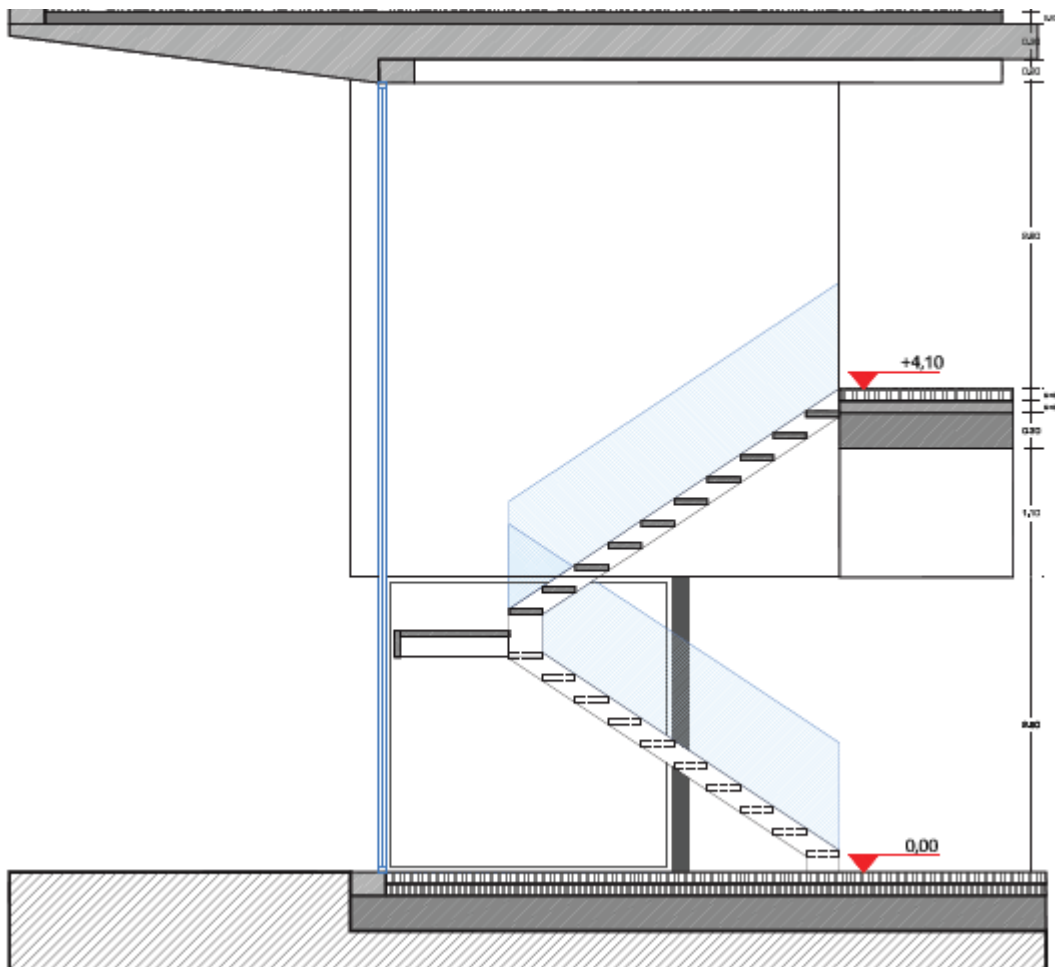
LIFT

"Schindler" brand elevator.



INTERIOR STAIRCASE

- Metal with glass rails



SWIMMING-POOL AND MACHINE ROOM

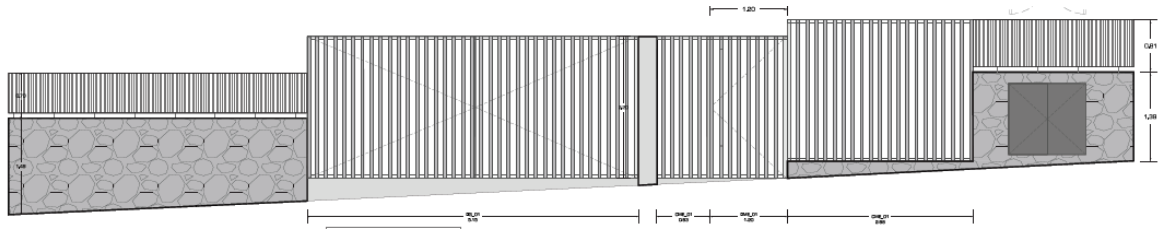
- “Infinity” system, size 3x8, mosaic ceramic finish, transparent glass railing.
- Water filtration system with water tank.

GARDEN

- Plants
- Lighting of the garden

FENCING OF THE PROPERTY

- Basalt stone and blocks wall



INFORMATIVE NOTE:

The Promoting Company reserves the right to carry out, during the course of the execution of the work, the necessary modifications due to technical, legal, commercial or supply requirements, without implying any impairment in the overall quality level.